



HOME > PRODUCTS > PROJECTORS > EPSON EB-U32

## Epson EB-U32



### Corporate Portable Multimedia Projectors

### Full High Definition image quality and wireless connectivity

[click for Larger Image](#)

If you are interested in purchasing an Epson Multimedia projector for business use, please call **1300 361 054**

[Printer Friendly Specs](#)

[Distance Calculator](#)

## Overview

### KEY FEATURES & BENEFITS

**3 x Brighter Colours, and Reliable Performance** – 3LCD, 3-Chip Technology.

**Amazing Colour Brightness** – Up to 3x brighter colours than 1-chip DLP projectors.

**High Definition** – Native resolution up to WUXGA (1920 x 1200) supports Full HD for presentations, videos and more.

**Wireless** – Connect directly to your computer, smartphone or tablet, without wires.

**Epson iProjection** – Wirelessly display and control from your iPhone®, iPad® or iPod Touch® and Android™ devices.

**USB Plug 'n Play** – Use the included USB cable to instantly project content, transmit images, sound and mouse operation through one cable.

**Low Cost of Ownership** – Long life, cost efficient lamps and a High Efficiency Filter extends the life of your projector and allows for hassle free maintenance.

**New Home Screen** – A new simple home screen, puts all the most commonly used functions at your fingertips.

**Built in Speaker** – Presenting is easy with a built in speaker.

**2 Year Projector Warranty** – Enjoy peace of mind.

### 3LCD Technology

All Epson projectors are based on 3-chip LCD technology for amazing colour, incredible detail and solid reliability. 3LCD's 3-chip architecture dedicates an entire chip to process each primary colour – red, green and blue, continuously. Unlike single-chip technology that delivers colour sequentially, you get full-time colour. The result is vibrant, realistic images and video all delivered with 3LCD's true-to-life colour.



Up to 3x Brighter Colours with Epson Projectors\*

Epson projectors use 3LCD Engines that have no colour wheel with a white segment and therefore don't force a tradeoff between white and colour brightness.

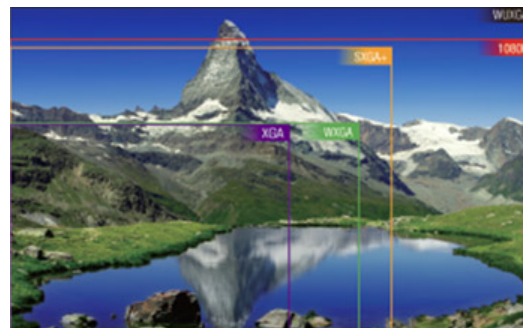
In fact, Epson projectors have up to 3x Brighter Colours than their leading competitive 1-chip DLP projectors\*. If you are looking for business and education projectors or 720p home entertainment projectors, know that choosing Epson projectors means up to 3x brighter colours. If you are looking for 1080p home entertainment projectors, you consistently get 2x and up to 3x Brighter Colours than competitor 1-chip DLP projectors\*. All Epson projectors list both White Brightness and Colour Brightness specifications, and all have high Colour Brightness.

\* Compared to leading 1-chip DLP business and education projectors based on NPD data, July 2011 through June 2012. Colour brightness (colour light output) measured in accordance with IDMS 15.4. Colour brightness will vary depending on usage conditions.

### High Definition

Featuring resolution up to WUXGA (1920 x 1200), Epson's entry level projectors deliver high quality images and crisp, sharp text without any distortion. And, it makes it easy to display more content. You can also display HDTV content at its native resolution with quality that surpasses even that of 1080p devices.

WUXGA resolution is ideal for any application requiring Full Hi-Def, including BluRay content, graphic intensive programs, educational film slides, and any application requiring exceptional detail.



### Wireless Connection to Your Laptop and Mobile Device

Conveniently connect directly to your computer, smartphone or tablet, without wires. A range of wireless features are built-in to make it easy to connect wirelessly to a computer or laptop via a direct peer-to-peer connection. Also connect wirelessly to a network to presentation, or monitor/control your projector over the wireless network.

### Epson iProjection App

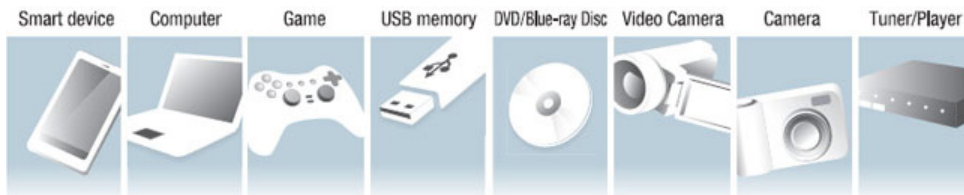
Display and control content from your iPhone, iPad or iPod touch and Android devices with the Epson iProjection App and any nearby wireless or networked Epson projector. This free application allows road warriors to travel light and present from their mobile devices. For teachers, it makes it easy to walk around the class and still be able to share



engaging content — larger-than-life. The app is easy to use and navigate with intuitive menu options that make it simple to bring your content to the big screen. You can now also use QR codes to quickly and easily connect and share your content through iProjection.

**Versatile Connectivity**

Connect from virtually any device, making your presentations and entertainment simple and more accessible.

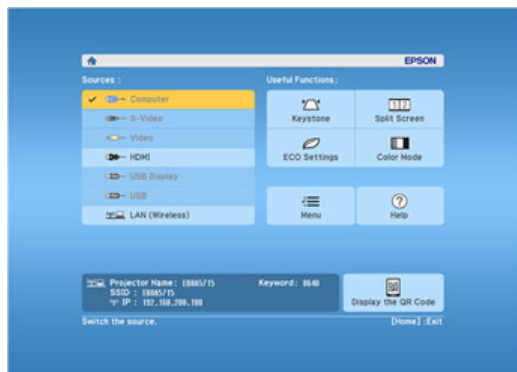


**USB Plug 'n Play**

Epson's advanced 3 in 1 USB connectivity enables instant Plug 'n Play setup for Video, Audio and Control. Forget about complicated computer key sequences and non-intuitive controls. Instead, just plug in a standard USB cable and let your presentation impress the audience.

**Low Cost of Ownership**

With an increased lamp life in ECO mode of 10,000 hours, it is now easier and more economical than ever to run our entry level projectors. The new entry level projectors also utilise a low lamp price and make use of a new High Efficiency Filter; extending the life of your projector and allowing for hassle free maintenance.



**New Home Screen**

A new simple and intuitive home screen puts all the most commonly used functions at your fingertips, making it easier than ever to find the functions you need.

You can also customise the home screen, adding the functions you use most so they're always easy to find.

**Built in Speaker**

A built in speaker makes presentations and videos hassle free.

**Split Screen**

Split Screen allows users to display content from two inputs simultaneously, side by side, on a single screen with the option of three different layouts. This makes it possible to display video and presentation materials simultaneously, or run video on both screens.



**Connectivity Panel**



## Specification

PRODUCT NAME	Epson EB-U32
PRODUCT CODE	V11H722053
<b>WHAT'S IN THE BOX</b>	EB-U32 Projector, 1.8m Power Cable, 1.8m Computer Cable, 1.8m USB Cable, Remote Control, 2 x AA Batteries, Soft Carrying Case
<b>TECHNOLOGY</b>	
Projection System	RGB liquid crystal shutter projection system
LCD Panel	0.67-inch wide panel with MLA (D10)
<b>OPTICAL</b>	
Zoom	1 - 1.2 (Optical)
Screen Size	30" to 300" [0.87m to 9.02m] (Zoom: Wide) 30" to 300" [1.07m to 10.98m] (Zoom: Tele)
Projection Distance	60" screen 1.8 - 2.17 m
Throw Ratio	1.38 (Zoom:Wide), 1.68 (Zoom:Tele)
Projection Lens F Number	1.50 - 1.71
Projection Lens Focal Length	20.42mm-24.5mm
Focus Method	Manual
<b>IMAGE</b>	
Colour Light Output	3,200 Lumens
White Light Output	3,200 Lumens
Resolution	WUXGA
Native Aspect Ratio	16:10
Contrast Ratio	15,000:1
Lamp Hours	5,000 hours (Normal) 10,000 hours (ECO)
Lamp Type	200 W UHE
Keystone Correction	Vertical: -30 to +30 degrees Horizontal -30 to +30 degrees
Tilt Angle	0 to 12 degrees
<b>CONNECTIVITY</b>	
Input: Video	1 x RCA (Yellow), 1 x Component (via D-sub 15-pin), 2 x HDMI (1x MHL)
Input: Computer	1 x D-sub 15-Pin (RGB), 1 x USB 2.0 type B
Input: Digital	2 x HDMI (1 x MHL)
Input: Audio	1 x RCA (Red/White), 2 x HDMI
Input: Control	1 x USB 2.0 type A
Input: Network I/O	1 x USB Type A
Wireless Connectivity	Included
Output Video	-
Output Audio	-
Speaker Output	2W
<b>ADVANCED FEATURES</b>	
EasyMP Network & Control	Yes (Wireless LAN included)
EasyMP Network Projection	Yes (Wireless LAN included)
PC Free Presentations	Yes
USB Plug 'n Play	Yes
AV Mute Slide	Yes
Instant Off	Yes
Auto Power On	Yes (PC, USB Display)
Direct Power On/Off	Yes
Security	Kensington lock

	Security cable hole Password protect function
Colour Modes	Dynamic, Presentation, Cinema, sRGB, Blackboard
<b>GENERAL</b>	
Dimensions D x W x H (Including Feet)	244 x 297 x 82 mm
Weight	Approx. 2.6kg
Lamp Warranty	1 Year or 750 hours*
Projector Warranty	2 Years (excluding lamps)
Power Consumption: Lamp on	277W
Power Consumption: Standby	0.26W
Noise Level	Normal/Eco: 37/28dB
*Which ever comes first	
Epson is the registered trademark of Seiko Epson Corporation. Epson ESC/P2 and Epson Stylus are trademarks of Seiko Epson Corporation. MicroDot is a trademark of Epson Australia Pty Limited. All other product names and other company names used herein are for identification purposes only and may be the trademarks or registered trademarks of their respective owners. Epson disclaims any and all rights in those marks. Specifications are subject to change without notice.	

Equipment supplied by Epson Australia is designed to function in conjunction with genuine Epson consumables and accessories specifically configured for it.

#### Usage Conditions

Epson products are designed and made to give highly reliable use and long life when used according to its specifications. With any system, product or device used in situations where human life may be involved or at risk, Epson advises that you should take all necessary steps to ensure the suitability of your Epson product for inclusion in your system, and recommends that you include fail-safe procedures and redundancy support or backup equipment in your system, to maintain the maximum safety margin and optimum system reliability. Examples include but are not limited to – do not interfere with any electrical components within the device, do not use items supplied with the product for purposes other than as intended by Epson (ie mains cords, inks, CDs, plastic wrapping) and do not make modifications to the product.

## Consumables

ACCESSORIES & OPTIONS	PRODUCT CODE
<u><a href="#">ELPFP13 Extension Pole - 450mm</a></u>	V12H003P13
<u><a href="#">ELPFP14 Extension Pole - 918mm to 1,168mm</a></u>	V12H003P14
<u><a href="#">ELPAP10 Wireless LAN Adapter</a></u>	V12H731P01
<u><a href="#">ELPMB23 Ceiling Mount</a></u>	V12H003B23
<u><a href="#">ELPAF32 Air Filter</a></u>	V13H134A32
<u><a href="#">ELPLP88 Projector Lamp</a></u>	V13H010L88

Epson is the registered trademark of Seiko Epson Corporation. Epson STYLUS, PerfectPicture, MicroPiezo, AcuPhoto Halftoning, QuickDry are the trademarks of Seiko Epson Corporation. All other names and company names used herein are for identification purpose only and may be the trademarks or registered trademarks of their respective owners. Epson disclaims any and all rights in those marks. All print samples shown herein are imulations. Specifications are subject to change without notice.